

Sustainable Watershed-based Planning: Working Together to Conserve Water Resources in Western Manitoba

Dr. Brian G. Kotak, General Manager
Manitoba Model Forest



Swan River, Manitoba
May 7, 2009

Objectives of the Workshop

- Provide information to assist in the development of a collaborative watershed monitoring program for the Duck Mountains and surrounding areas
- Facilitate discussions between various stakeholder groups/First Nations and facilitate the development of new partnerships
- Provide an opportunity to discuss local issues and challenges related to the management of water resources in the western region of Manitoba

Workshop Sponsors and Presenters

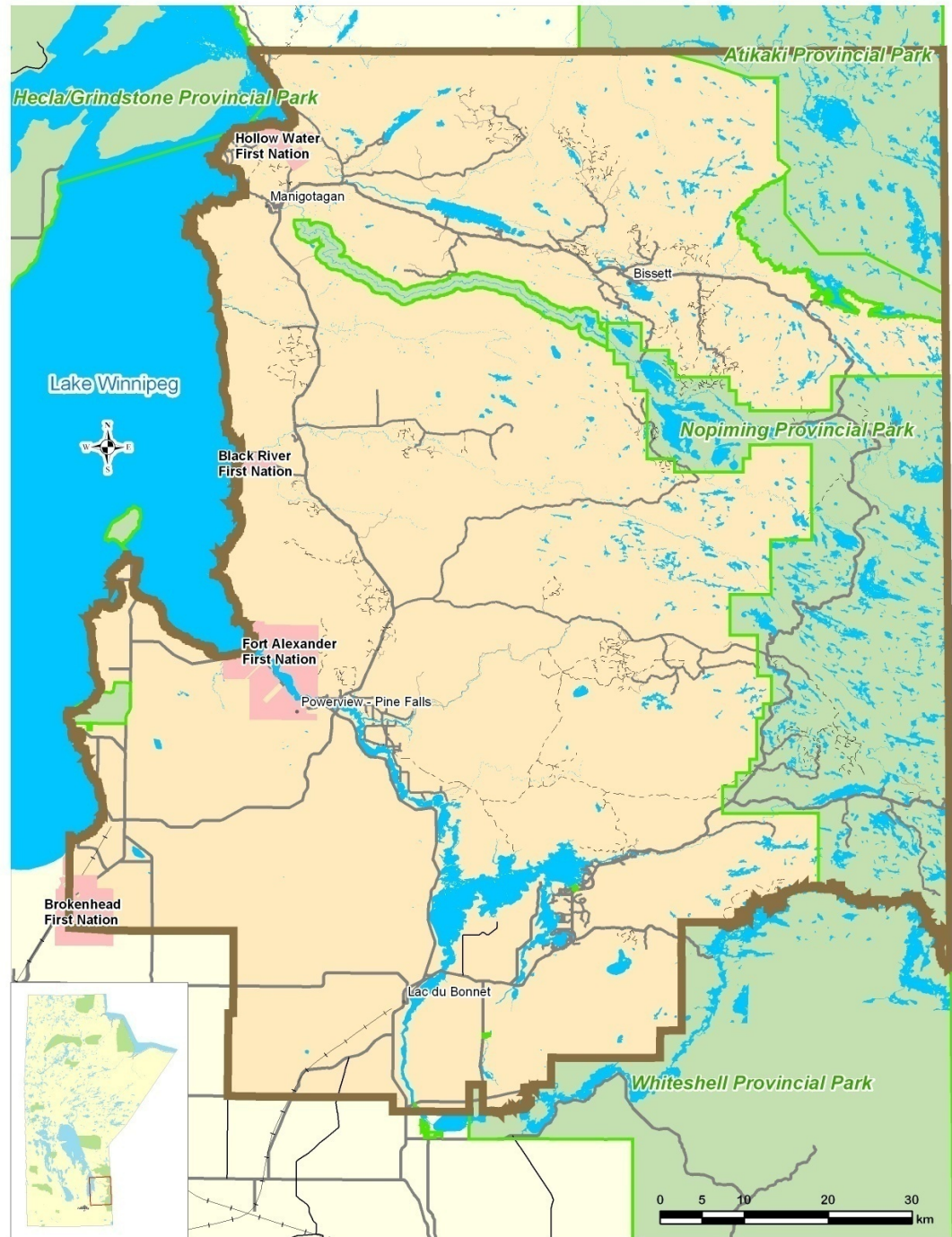
- Manitoba Model Forest
- Louisiana Pacific
- Ducks Unlimited Canada
- Manitoba Water Stewardship
- Conservation Districts
 - Lake of the Prairies
 - Intermountain
 - Swan Lake
- West Region Tribal Council
- National Council for Air and Stream Improvement

MBMF – Who We Are

- Non-profit organization, founded in 1992 as part of the Canadian Model Forest Program
- Dedicated to building partnerships among communities, industries, levels of government and other non-government organizations
 - Enhance local participation in natural resource management decision-making
 - Enhance our collective understanding of the boreal forest, which supports us, and develop better management tools
 - Enhance forest-based economic opportunities
 - Share our experience world-wide

Manitoba Model Forest Area

1 Million Hectares
(10,000 km²)



17 Years, More than 400 Projects

- Landscape Management
 - Woodland caribou/habitat
 - Moose management
 - Water quality
 - Natural disturbance
 - Computer simulation tools for forest management planning

17 Years, More than 400 Projects

- Community-based Projects
 - First Nation Traditional Area Advisory Committees (TAAC)
 - Moose co-management
 - Trapper Involvement
 - First Nation Land Use
 - First Nation Youth Archaeology
 - Non-timber Forest Products

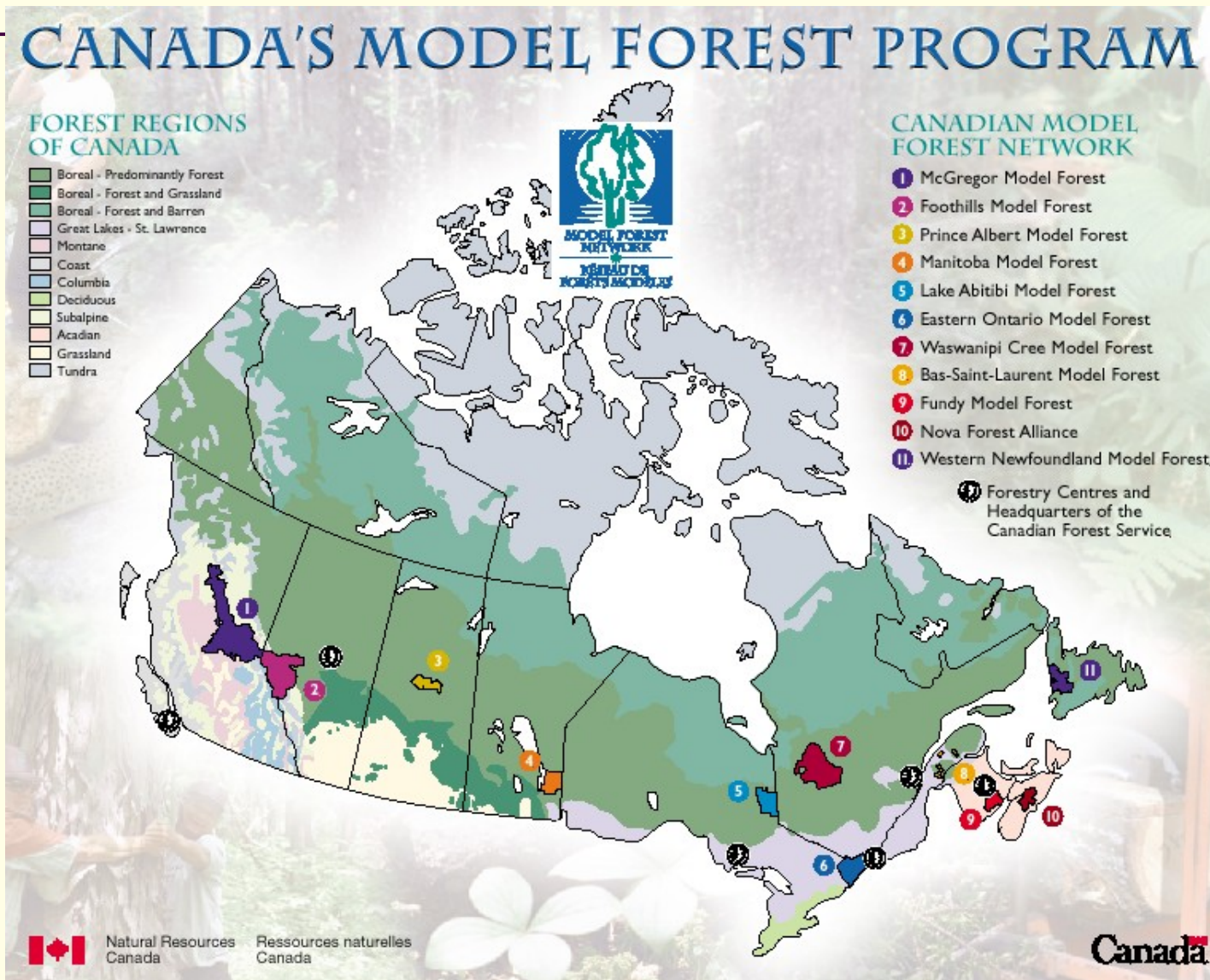
17 Years, More than 400 Projects

- Education and Training
 - Provincially-accredited natural resource and forest ecology curricula
 - Junior Rangers youth training camp
 - Involvement of students in MBMF research projects
 - Training of future school teachers
 - Training of existing school teachers
 - Winnipeg River Learning Centre

International Projects

- Facilitated establishment of Model Forest sites in Japan, Philippines, Thailand
- Monarch butterfly habitat conservation, gender equity, social improvement in Mexico (Monarch Butterfly Model Forest, Mexico)
- Medicinal plants and Indigenous community micro-enterprise establishment (Chiloe Model Forest, Chile)
- Ethno/Ecotourism with Indigenous Cabecar communities (Reventazon Model Forest, Costa Rica)

Former Model Forest Program



Forest Communities Program Sites



Canadian Model Forest Network

MANITOBA

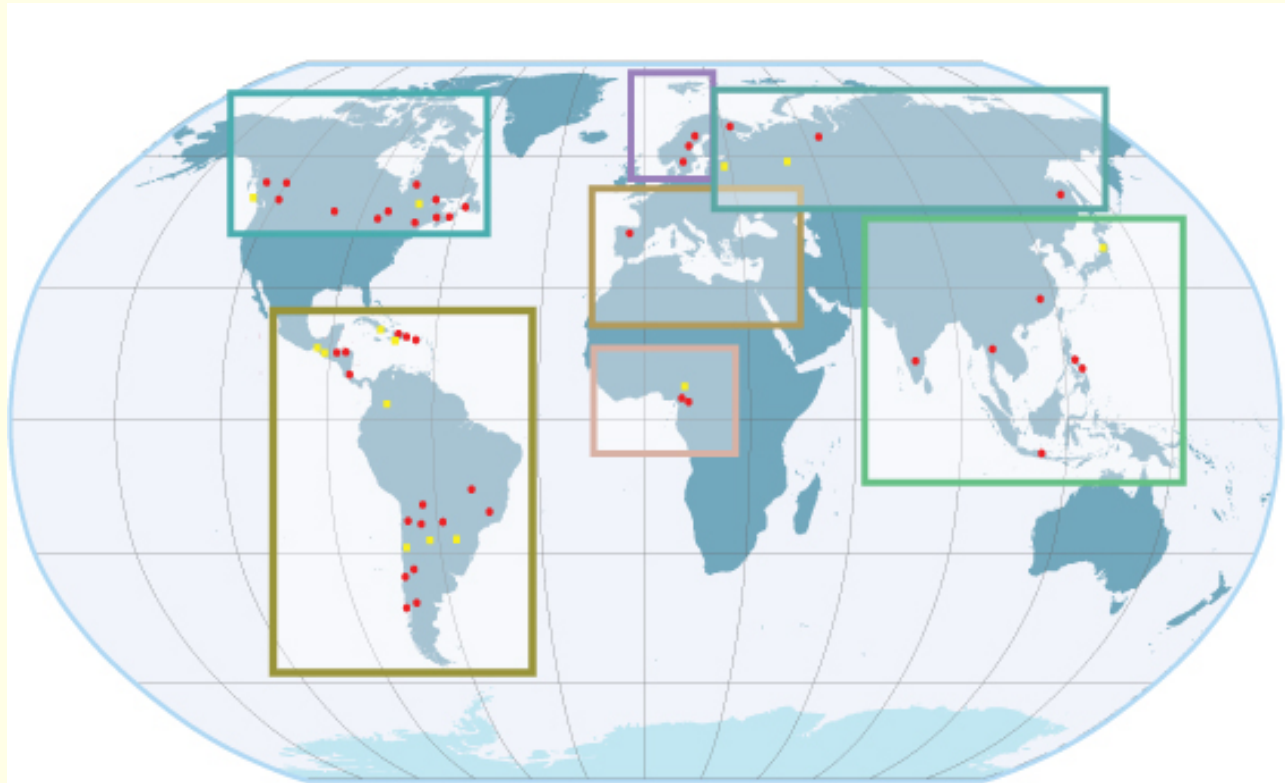


CANADIAN
MODEL FOREST
NETWORK



- 1 Clayoquot Forest Community
- 2 Resources North Association
- 3 Foothills Research Institute
- 4 Prince Albert Model Forest
- 5 Manitoba Model Forest
- 6 Northeast Superior Forest Community
- 7 Lake Abitibi Model Forest
- 8 Eastern Ontario Model Forest
- 9 Waswanipi Cree Model Forest
- 10 Le Bourdon Projet
- 11 Lac-Saint-Jean Model Forest
- 12 Fundy Model Forest
- 13 Nova Forest Alliance
- 14 Model Forest of Newfoundland & Labrador

International Model Forest Network



- 22 Countries
- 55 Sites