

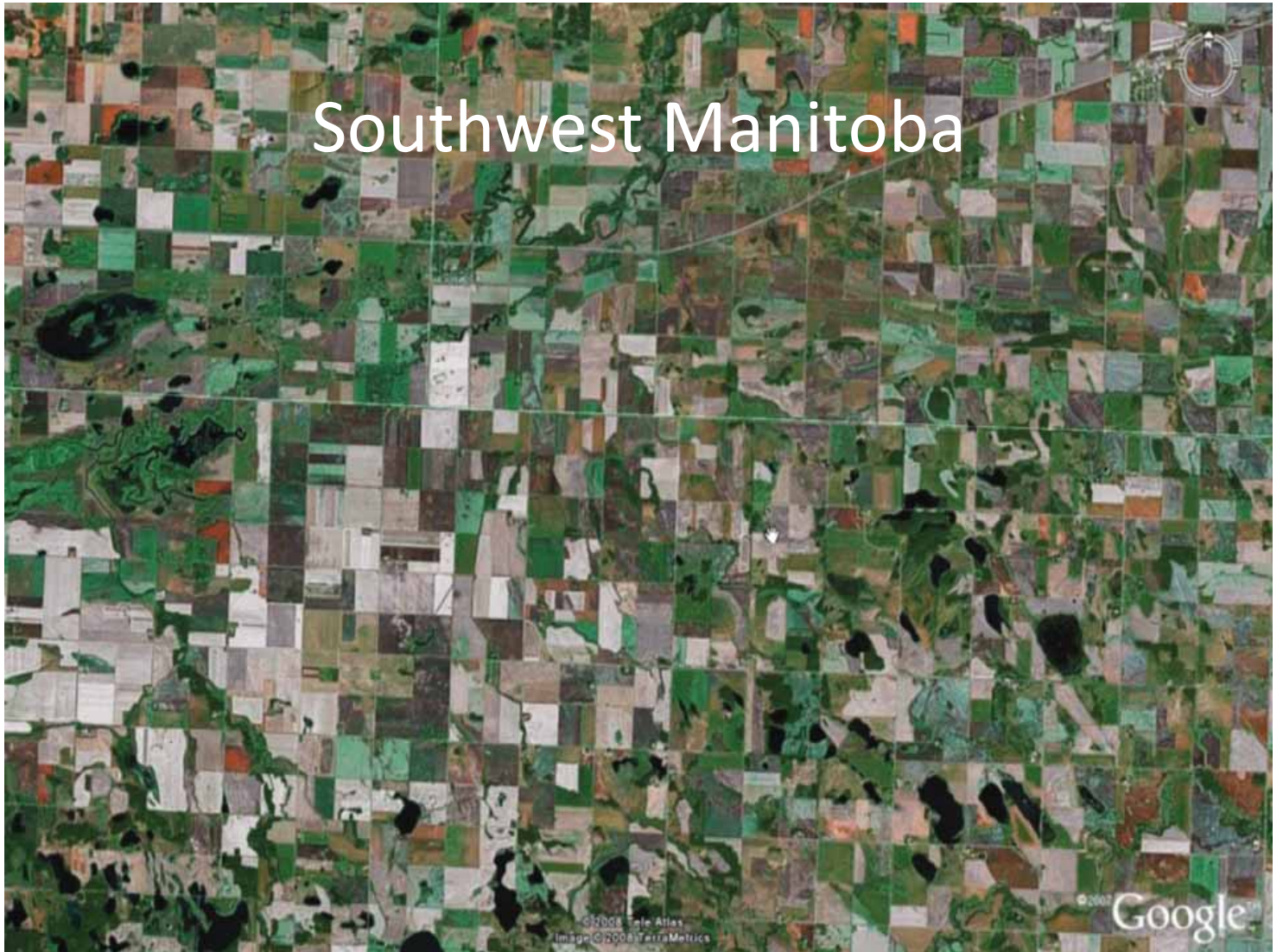


Landscape Planning and Design:
From Science to Implementation

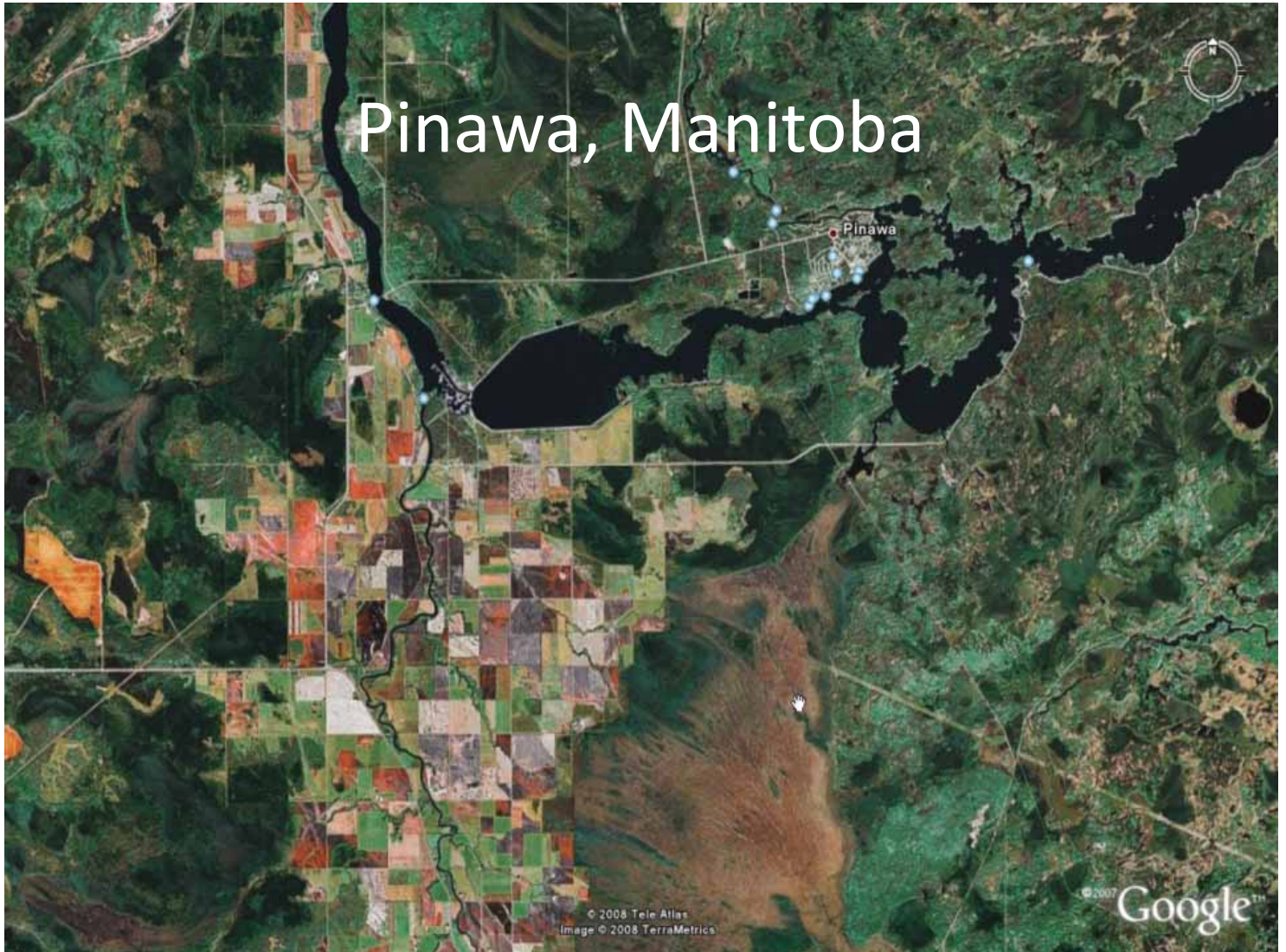
Dr. Brian G. Kotak, General Manager
Manitoba Model Forest

Winnipeg, Manitoba April 15-16, 2008

Southwest Manitoba



Pinawa, Manitoba



© 2008 Tele Atlas
Image © 2008 TerraMetrics

© 2007 Google™

Near Grimshaw, Alberta

Image © 2008 DigitalGlobe
© 2008 Terra Atlas
Image © 2008 TerraMetrics

© 2007 Google™



Foothills of Alberta

© 2008 Tele Atlas

Image © 2008 DigitalGlobe
Image © 2008 TerraMetrics

© 2007 Google™

Foothills of Alberta

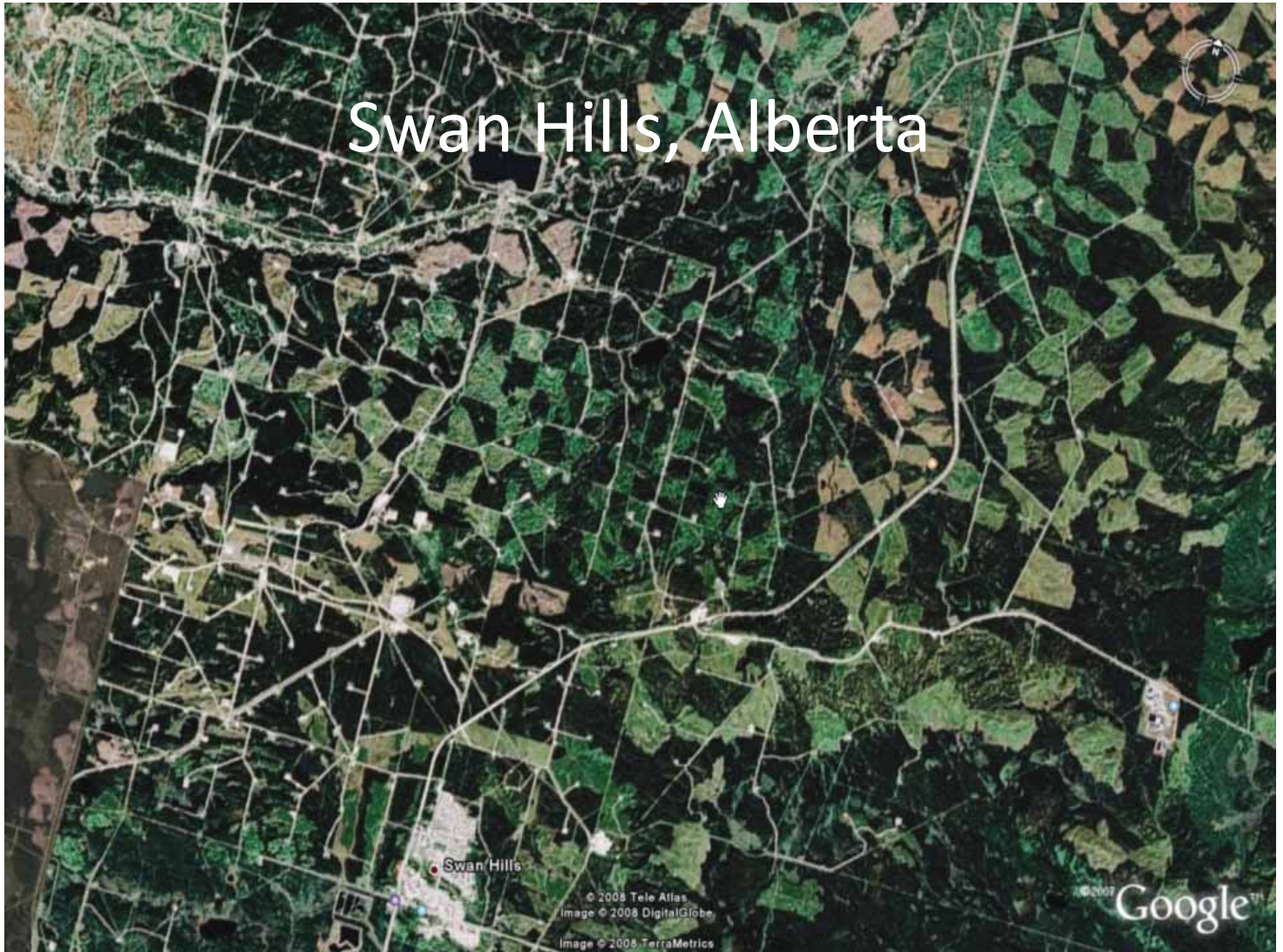


Division No. 18

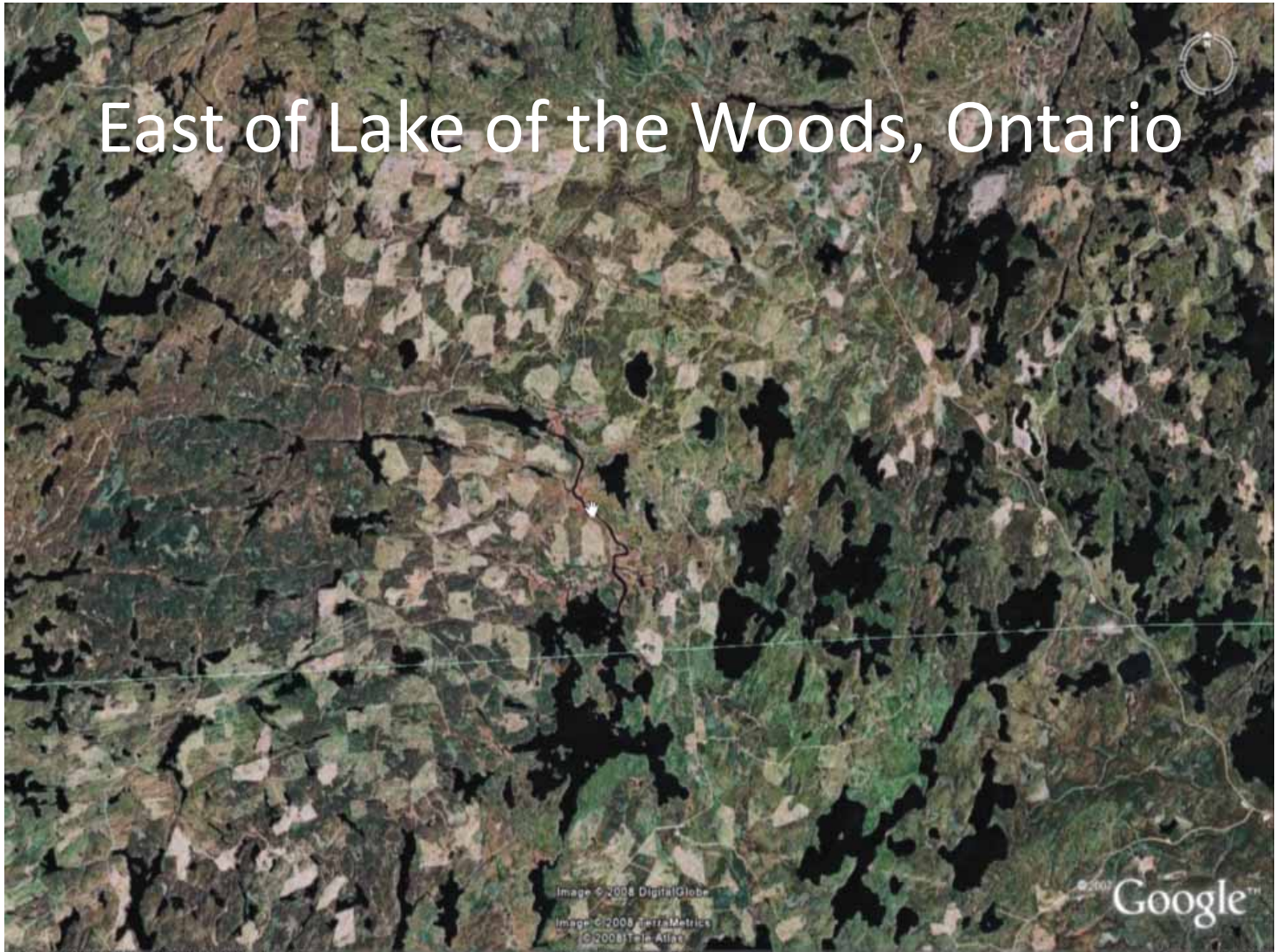
© 2008 Tele Atlas
© 2008 TurnHere, Inc.
Image © 2008 DigitalGlobe
Image © 2008 TerraMetrics

© 2007 Google™

Swan Hills, Alberta



East of Lake of the Woods, Ontario



East of Lake of the Woods, Ontario

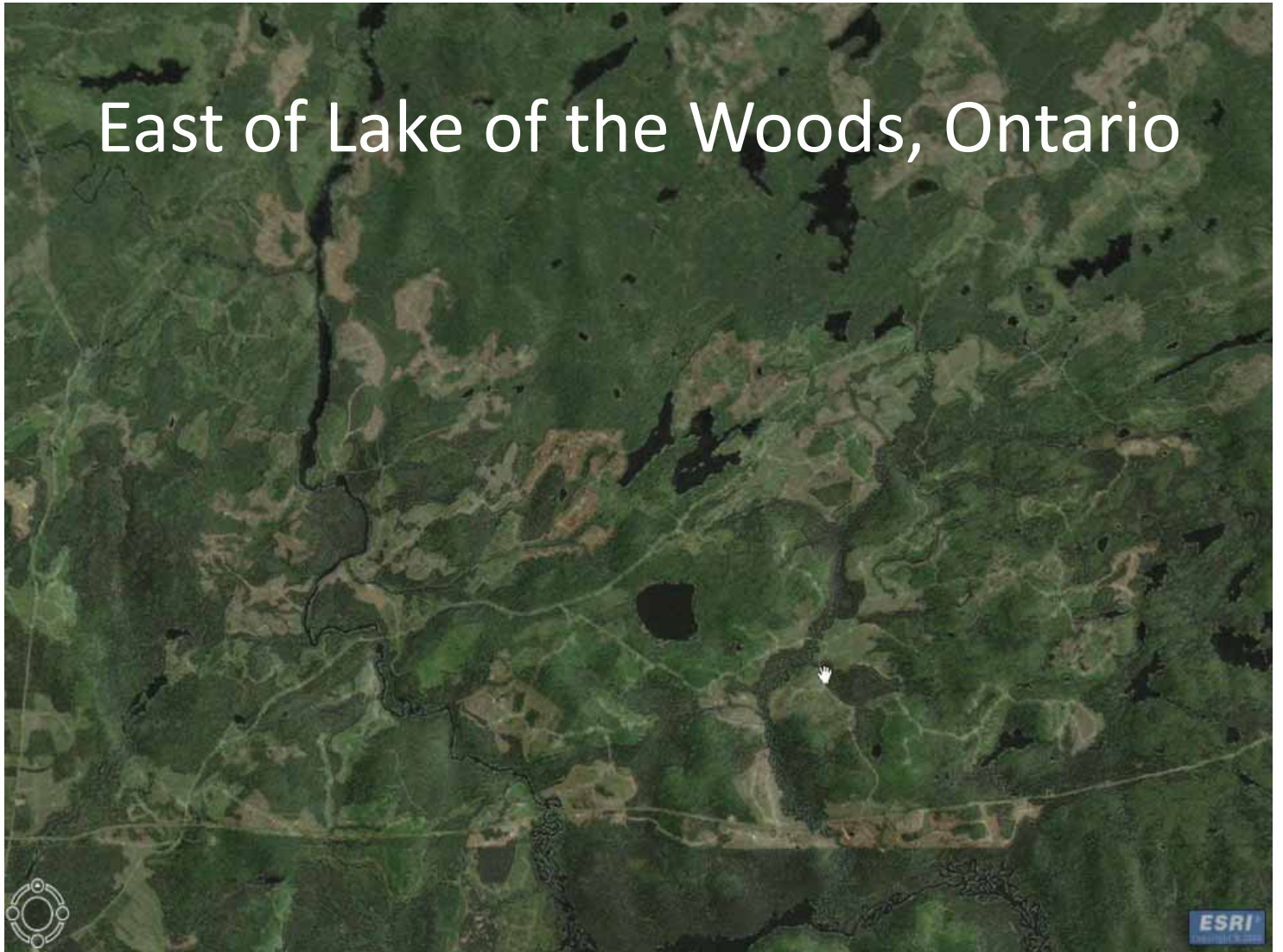


© 2008 Tele Atlas

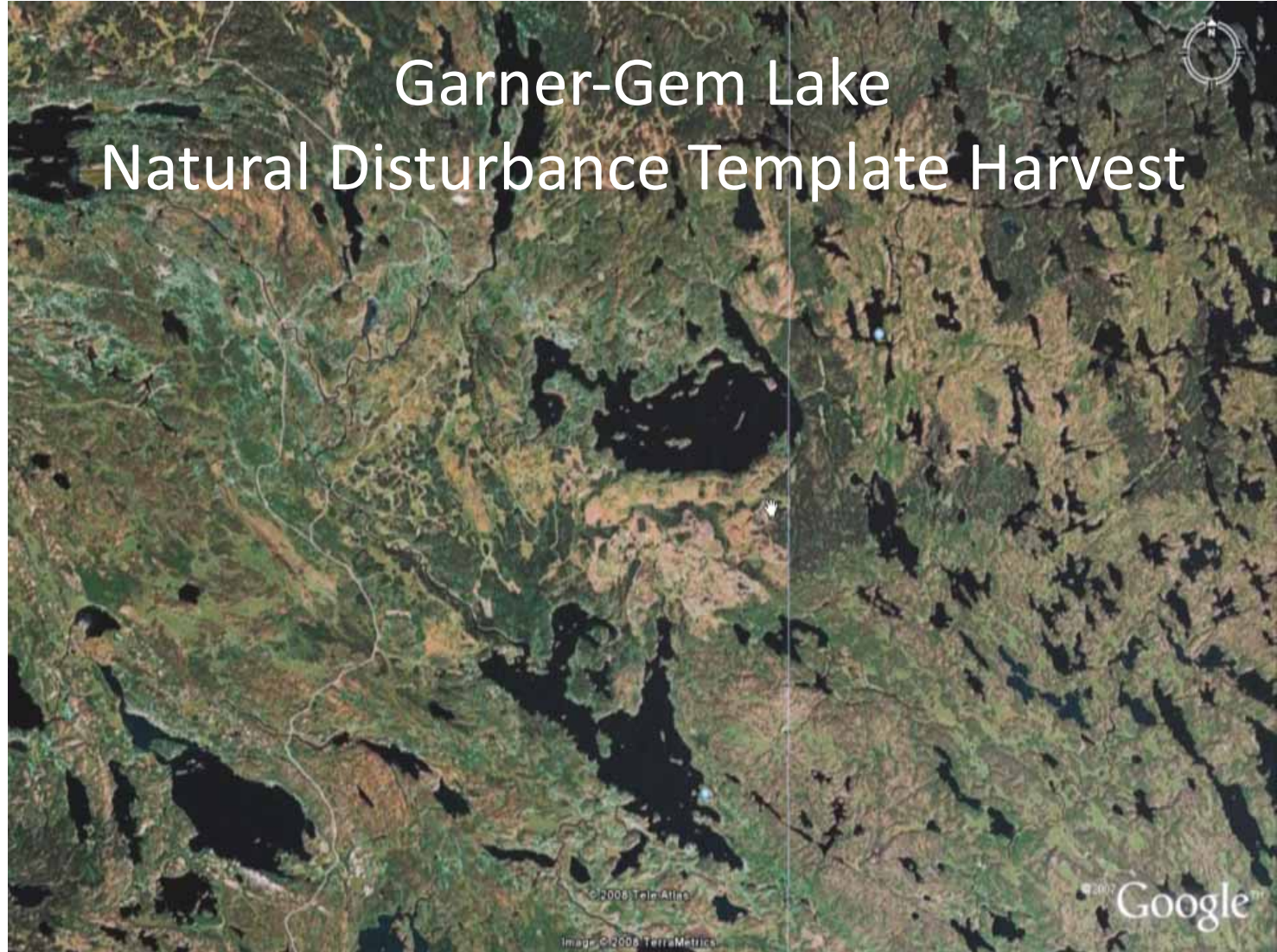
Image © 2008 TerraMetrics
© 2008 Europa Technologies

© 2008 Google™

East of Lake of the Woods, Ontario



Garner-Gem Lake Natural Disturbance Template Harvest



© 2008 Teim Allan

Image © 2008 TerraMetrics

© 2007 Google™

Manitoba Model Forest area

© 2008 Tele Atlas

© 2007 Google™

Image © 2008 TerraMetrics



Landscape Design Considerations

- Maintaining natural landscape patterns and connectivity between habitats
- Planning on a natural landscape boundary basis
- Accommodating species at risk, species with large home ranges and provincially- and regionally-rare species
- Providing for an adequate number and adequate size of old growth forests areas
- A landscape approach to protected areas and special conservation areas

Landscape Design Considerations

- Integrating forest operations with other land use practices and industries
- Linking stand level planning (such as cut block and operating area layout, riparian buffers) to landscape level planning
- When required, restoration of natural landscape patterns and forest communities significantly diminished by past management actions
- Incorporating First Nation and stakeholder interests

Moving Towards Better Planning

- Moving to landscape-level planning and strategies carries risk
- Moving to landscape-level planning will challenge our current assumptions, current management philosophies and pre-conceptions

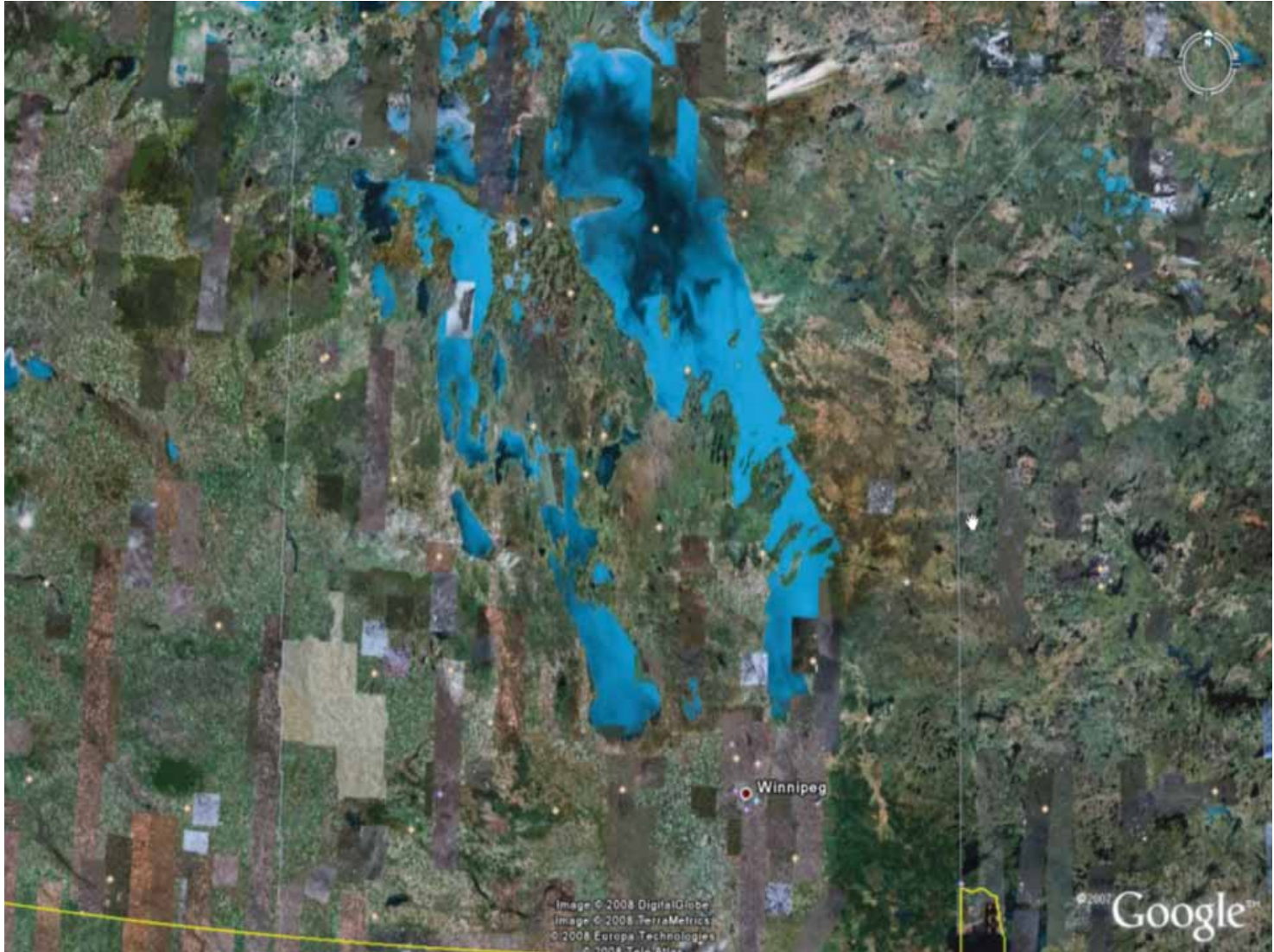


Image © 2008 DigitalGlobe
Image © 2008 TerraMetrics
© 2008 Europa Technologies
© 2008 TerraSoft

© 2007 Google™

